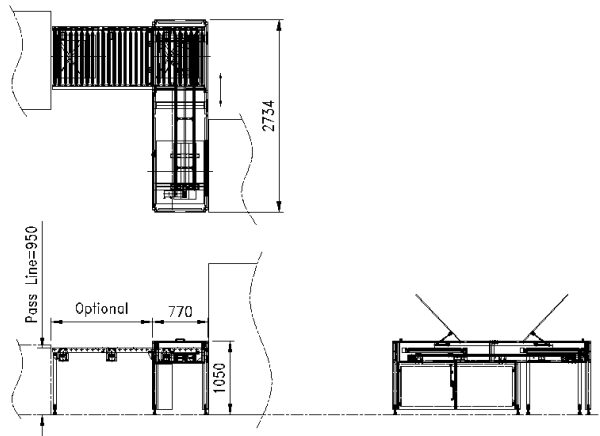


TS91003-8

TS91003-8 Function a PCB shifter conveyor consists of a roller conveyor and a shifter. The roller conveyor transports the PCB from upstream process to the shifter. When the PCB enters the shifter, the rollers on the shifter will stop and the shifter transports the PCB cross wise. After completion, the rollers on the shifter will transport the PCB to downstream process. The orientation of the PCB remains unchanged

Machine Specifications

| | |
|-----------------------|---------------------------------|
| Model | TS91003-8 |
| Panel Size | 14" x 24"(Min)-21" x 24"(Max) |
| Panel Thickness | 0.05mm - 3mm |
| Cycle Time | 7-9 panel per minute |
| Conveyor Pass Line | 950 ± 30mm |
| Interleave | NO |
| Electrical Connection | AC220V+N+PE, 1 phase,50Hz,1.5KW |
| Air Supply | 5 Bar, 150l/min |
| Machine Weight | 300 Kg per unit |
| Machine Size | 2734mm(L)x770mm(W)x1050mm(H) |



Options

Safety Feature Swing door with safety sensor ; Sliding door with safety sensor ; Curtain sensor

Your Ideal Partner in Automated Engineering Equipment
Email: transystem@pacific.net.sg